

Triton[®] T-700

Traction Unit

User Manual



 **CHATTANOOGA
GROUP, INC.**
ISO 9001 Certified

Table of Contents

Warranty	5
Foreword	6
Precautionary Instructions	6
Set-up	7
Operation	8
Control Panel	9
Technical Specifications	10
Table Specifications	11
Calibration	12
Troubleshooting	15
Electrical Assembly	16
Electrical Components Parts List	17
Mechanical Assembly	18
Mechanical Components Parts List	19
Triton® Tables	20
Schematics	A1

Warranty

Chattanooga Group, Inc. ("Company") warrants that the Triton® T-700 ("Product"), excluding accessories, is free of defects in material and workmanship. This warranty shall remain in effect for one (1) year from the date of original consumer purchase of this Product and extends to any owner of the Product during the warranty period. If this Product fails to function during the warranty period because of a defect in material or workmanship, Company or the selling dealer will replace or repair this Product without charge within a period of 30 days from the date on which the defective Product is returned to the Company or the dealer. Company or the dealer will ship the replacement or the repaired Product to the consumer's facility.

All repairs must be performed by a service center authorized by Chattanooga Group, Inc. Any modifications or repairs performed by unauthorized centers or groups will void this warranty. To participate in warranty coverage, this Product's warranty registration card (included with Product) must be filled out and returned to Chattanooga Group, Inc. by the original owner within ten business days of purchase.

This Warranty Does Not Cover

1. Replacement parts or labor furnished by anyone other than the Company, the dealer or an approved Company service agent.
2. Defects or damage caused by labor furnished by someone other than the Company, the dealer or an approved Company service agent.
3. Any malfunction or failure in the Product while it is in the possession of the owner during the warranty period if the malfunction or failure is not caused by a defect in material or workmanship, or if the malfunction or failure is caused by unreasonable use, including the failure to provide reasonable and necessary maintenance.

Company Shall Not Be Liable for Incidental or Consequential Damages to Property or Business

Some states do not allow the exclusion or limitation of incidental or consequential damages, so the above limitation or exclusion may not apply to you.

TO OBTAIN SERVICE from Company or the selling dealer under this warranty, the owner must do or abide by the following:

1. A written claim must be made within the warranty period to the Company or the selling dealer. If the claim is made to the Company, written claim should be sent to:
4717 Adams Road • P.O. Box 489 • Hixson, TN 37343 U.S.A.
Phone: (800) 592-7329, Outside US: (423) 870-2281, Fax: (423) 875-5497
2. The Product must be returned to the Company or the selling dealer by the owner.

This warranty gives you specific legal rights and you may also have other rights which vary from state to state.

The Company does not authorize any person or representative to create for it any other obligation or liability in connection with the sale of the Product. Any agreement not contained in the warranty shall be void and of no effect.

Foreword

This manual has been written for the owners and operators of the Triton® T-700. It contains general instructions on operation, precautionary practices, maintenance and parts information. In order to maximize use, efficiency and the life of your unit, please read this manual thoroughly and become familiar with the controls as well as the accessories before operating the unit.

Specifications put forth in this manual were in effect at the time of publication. However, owing to Chattanooga Group's policy of continual improvement, changes to these specifications may be made at any time without obligation on the part of Chattanooga Group, Inc.

Precautionary Instructions

1. **CAUTION:** Read, understand and practice the precautionary and operating instructions. Know the limitations and hazards associated with the Triton® T-700. Observe the precautionary and operational decals placed on the unit.
2. **CAUTION:** Make certain that the unit is electrically grounded and that a grounding lead is included in the incoming electrical service. In cases where a cord and plug are used, make certain that the grounding plug connects to a suitable ground. Follow the grounding procedures indicated in the National Electrical Code.
3. **CAUTION:** Follow all precautionary instructions indicated on decals located on the unit.
4. **WARNING:** Always tighten hand adjustment knobs securely to avoid any slipping.
5. **WARNING:** The patient control switch must be in the patient's grasp throughout the treatment.

Set-up

- Secure the Triton® T-700 traction unit to the pedestal by tightening the locking knobs at the middle top and bottom of the unit.



- Check the voltage rating on the serial plate located on the back of the unit. Plug the unit into a 120 volt or 220/240 volt AC outlet as required. DO NOT attempt to use direct current. Follow the procedures indicated in the precautionary instructions. DO NOT attempt to use the unit if it is not properly grounded.

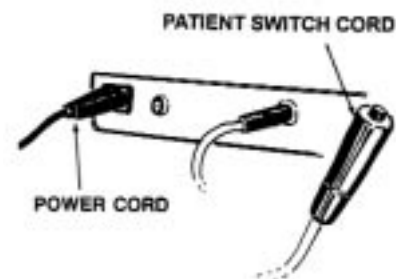
- If you're using a Triton® TRE-24 traction table with your T-700, plug the power cord into the electrical service outlet located on the base of the table. Then make sure the table is properly plugged in and grounded.



- WITH THE POWER TURNED OFF, push the rope release lever and pull out sufficient rope to connect the "S" hook to the patient harness. Then take up the slack in the rope.

- Always make certain that the power cord is properly plugged into the unit.

- The patient switch must be plugged in for the unit to operate. **The control must be given to the patient.** Instruct the patient that pressing the red button will stop the traction.



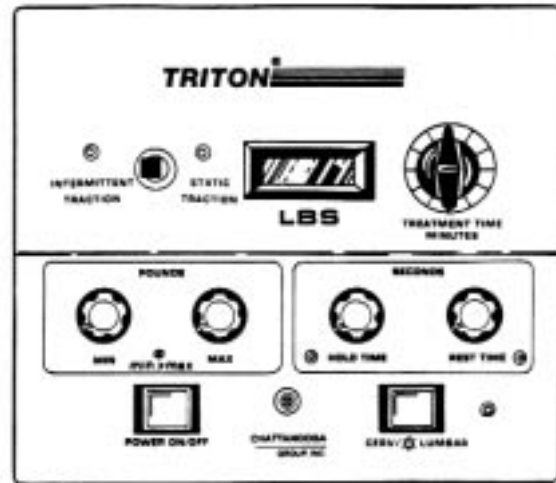
Operation of Model T-700

- Step 1:** Connect power cord to unit and plug the cord into the appropriate receptacle.
- Step 2:** Plug patient control switch into front of unit.
- Step 3:** Attach cervical head halter or the 7040 Cervical Traction or pelvic belt and thoracic restraint to the patient before proceeding with the traction setup. Make sure that the patient is comfortable with the fit of the appliance.
- Step 4:** Pushing the rope release lever on the top of the unit, withdraw ample traction cord to attach the "S" hook directly to the appliance or to the spreader bar.
- Step 5:** Holding the rope to prevent jerking, push the release lever again to take up all the slack in the rope.
- Step 6:** Give the Patient Switch Cord to the patient. Instruct the patient that pressing the red button will stop the traction cycle (very important operation precaution procedure).
- Step 7:** Depress the green power switch. It will light up when the power is on.
- Step 8:** Select the traction mode to be used. A yellow light will appear for intermittent traction, a red light for static traction.
- Step 9:** Select the maximum poundage to be given during traction treatment.
- Note:** If the maximum poundage selected is above 40 lbs. (18 kgs), the lumbar range lights and an audible alarm sounds repeatedly. This alarm can be terminated by depressing the red cervical/lumbar button.
- Step 10:** When a minimum poundage is desired, select a poundage level below your maximum pounds
- Note:** If minimum poundage exceeds maximum poundage, an audible alarm will sound repeatedly and a red light will appear indicating minimum has exceeded the maximum. This situation can be corrected by simply lowering the minimum below the maximum.
- Step 11:** Select hold time from 0 to 60 seconds.
- Step 12:** Select rest time from 0 to 60 seconds.
- Note:** Your Triton® T-700 is now ready to perform the traction mode and sequence that you have programmed.
- Step 13:** Turn the timer switch all the way around clockwise and then back to the desired treatment time and the machine will automatically begin to pull.
- Step 14:** Watch the patient and unit for the first three or four cycles and re-adjust the garments if necessary.
- Step 15:** Ask the patient to depress the patient control switch so he/she can become familiar with it and have the security of knowing the treatment can be stopped at any point of discomfort. When the patient switch has been pushed, rotate the treatment timer off and back on to reset alarm. Unless this sequence is followed correctly, the machine will not function.
- Step 16:** The Triton® T-700 will automatically stop at the end of the treatment time and the machine will return to zero pounds of pull.
- Step 17: Caution:** Federal law limits this device to the use by or on the order of a physician or licensed practitioner.

Control Panel

The Triton® T-700 traction unit is an economical system with many of the features contained in the MP-1. Equipped with dial-type controls, the T-700 features both intermittent and static traction. Intermittent traction can be administered with a pre-selected minimum pounds of traction pull. The T-700 is built with Triton high quality and solid performance in mind with the following features:

- Two modes of treatment available, intermittent or static, with selector switch.
- Intermittent traction is administered with a pre-selected minimum pounds of traction pull with the minimum pounds dial.
- Select from 0 to 200 lbs. (0 to 91 kg on request) of traction with the maximum pounds dial.
- Illuminated on-off switch.
- Treatment time from 1 to 60 minutes is programmed by selector dial.
- Hold time selection is from 0 to 60 seconds.
- Rest time selection is from 0 to 60 seconds.
- A red LED illuminates if more than 40 lbs. (18 kg) is set on max traction and unit will not pull. Pressing the Cerv/Lumbar switch will put the unit in Lumbar Mode where up to 200 lbs. (91 kg) max traction may be selected. The Cerv/Lumbar button flashes in the Lumbar Mode.



The Triton® T-700 Control Panel

Audible Alarm

The audible alarm signals when:

1. The patient switch is depressed. Turn cycle treatment timer off and back on to reset alarm.
2. Maximum traction is set in excess of 40 lbs., and lumbar mode is not selected.
3. The minimum pounds setting has been set in an amount that exceeds the maximum pounds setting.
4. A change in traction pull has been created by conditions outside the operation of the unit, such as a shift in the patient's weight.
5. The patient switch cord is not plugged into unit.

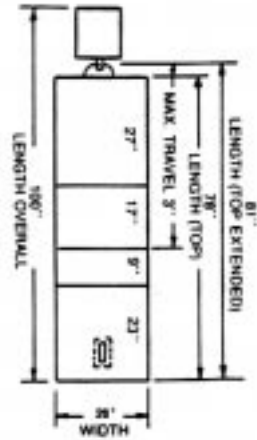
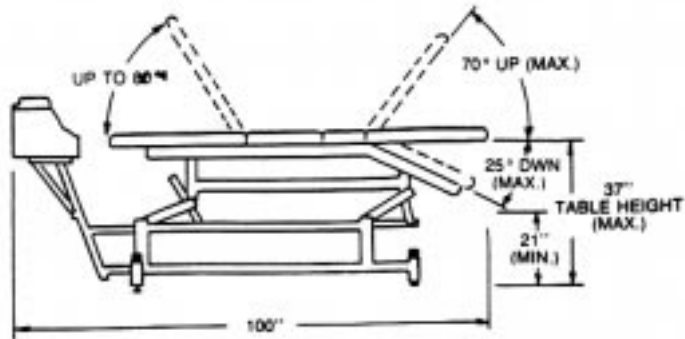
Technical Specifications

Main Supply:	2A/120V (1A/220-240V)
Frequency Range:	50/60Hz
Main Fuse(s):	2A Slo-Blo (1A/250V Anti-Surge)
Treatment Time:	1 - 60 Minutes
Hold Rest Times:	0 - 60 Seconds
Traction Range:	0 - 200 lbs. (91 kg)
Class/Type:	1B (According to IEC 601-1)
T-700 Dimensions:	13 1/2" x 12 3/4" x 9 3/4"(34.3 cm x 32.4 cm x 24.8 cm)
T-700 Weight:	34 lbs., 5 oz (15.6 kg)

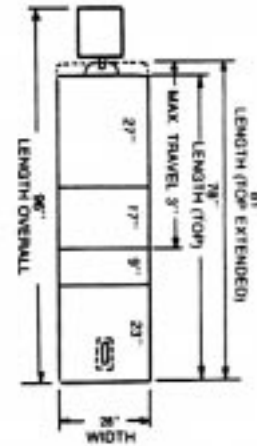
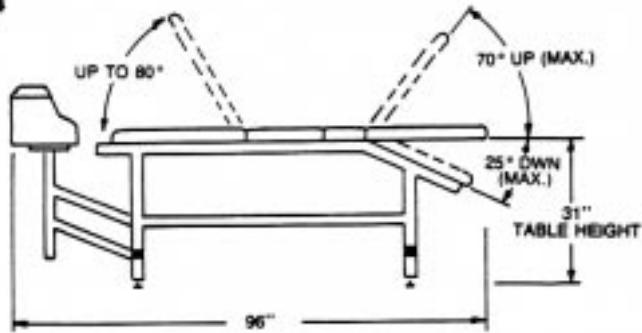
Danger: Risk of explosion if used in the presence of flammable anesthetics.

Table Specifications

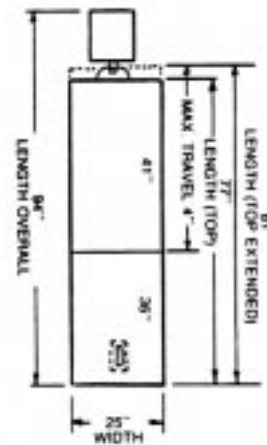
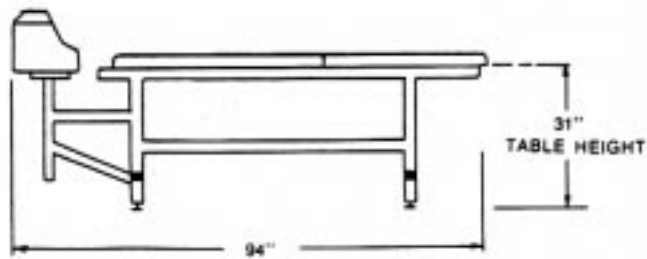
TRE-24



TRF-24



TRF-22



Calibration

All adjustments must be made by a qualified person using proper equipment.

Equipment Needed

- Strain gauge and meter or dynamometer capable of indicating 0 - 200 lbs. with resolution of 0.5 lbs.
- 10K potentiometer to substitute for transducer.
- Stopwatch
- 1lb. (1/2 kg) and 1/2 lb. (1/4 kg) weights.

Calibration

1.0 *Anti-Reverse Switch Adjustment*

- 1.1 Verify power cord and patient cord are attached. Plug power cord into power source.
- 1.2 With power **OFF**, actuate rope release and pull out all the rope.
- 1.3 With power **ON**, pull gently on rope.
- 1.4 Adjust actuator arm of the anti-reverse switch by bending it until firm pressure on the rope will shut off the motor.
- 1.5 With power **OFF**, rewind rope, being careful to keep pressure on rope when released.

2.0 *Up Limit Switch Adjustment:*

- 2.1 Connect rope/hook to strain gauge or dynamometer.
- 2.2 Turn R28 fully clockwise.
- 2.3 Remove the transducer connection and connect the 10K pot in place of the transducer.
- 2.4 With power **ON**, set Treatment Timer for 15 minutes in Static mode.
- 2.5 Adjust 10K pot to run motor down.
- 2.6 Turn up limit adjustment screw fully clockwise. It is at the top of the machine.
- 2.7 Turn 10K pot to run motor up.
- 2.8 Monitor strain gauge/dynamometer and adjust up limit screw counterclockwise to trip at 220 lbs. (U.S.) or 240 lbs. (109 kg/Export) + 5 lbs. The trip point will sound an audible alarm and the motor will run down. Turn power **OFF** and **ON**, and then turn 10K pot to run motor down and then up to recheck trip point.
- 2.9 Turn power **OFF**, unplug 10K pot and reconnect transducer.

3.0 *Open Transducer Protection Circuit Adjustment:*

- 3.1 Actuate rope release and obtain slack in the rope.
- 3.2 Turn Treatment Timer to 0 and press power **ON**.
- 3.3 Measure voltage on IC6 pin 2, then adjust R28 to obtain voltage at IC6 pin (3) 100 mv higher than pin (2).
- 3.4 Verify IC6 pin (1) is high (=11v)
- 3.5 Turn power **OFF**.

4.0 Zero Adjustment (Rope must be slack):

- 4.1 Set Treatment Timer to 15, Max lbs. to 200 (91 kg), Min. to 0 and Mode to Static.
- 4.2 Turn power **ON** and push Lumbar switch.
- 4.3 Adjust R7 until strain gauge/dynamometer reads 200 lbs. (U.S.) or 220.5 lbs. (91 or 100 kg/Export).
- 4.4 Turn Treatment Timer to 0 and allow unit to release rope tension until the rope is slack.
- 4.5 Set Treatment Timer to 15, Max lbs. to 60 (27 kg), Min. fully counterclockwise, Hold to 10, Rest to 30 and Mode to Intermittent.
- 4.6 Turn power **ON**. When the machine reaches Rest time, strain gauge/dynamometer minimum should read 2.5 to 3.1 lbs. (1.13 kg to 1.41 kg). Adjust R3 if needed and allow T-700 to run up and return to Rest to verify adjustment. Turn Timer **OFF**.
- 4.7 Pull rope out for slack rope and set trimmer "VR-1" on bottom of the digital read-out for an indication of "000" to "001."
- 4.8 Set Treatment Timer to 15, Max lbs. to 30 (14 kg), Min. fully counterclockwise, Hold to 10, Rest to 30 and Mode to Intermittent.
- 4.9 Turn power **ON**. When the machine is in Rest time, verify panel meter is less than .005 lb. (.0023 kg), and that the Rest time LED is **ON**. If not, repeat steps 4.5 through 4.9.

5.0 Open Transducer Test:

- 5.1 Set Treatment Timer to 15, Max lbs. to 30 (14 kg), Min. to 0 and Mode to Static.
- 5.2 Turn power **ON** and unit will run up and stop.
- 5.3 Unplug transducer and unit will alarm and run down.
- 5.4 Plug in transducer and alarm will stop and the machine will resume normal operation.

6.0 Motor Interlock Test:

- 6.1 Turn power **ON** and activate timer.
- 6.2 Remove patient cord and alarm will continuously sound at a 1 second on, 1 second off rate.
- 6.3 Verify that tension on rope does not cause motor to run up.
- 6.4 Insert patient cord.
- 6.5 The alarm should continue until power is turned **OFF**.

7.0 Patient Switch Test:

- 7.1 Set Treatment Timer to 15, Max lbs. to 30 (14 kg), Min. to 0 and Mode to Static.
- 7.2 Turn power **ON** and activate timer.
- 7.3 Push and release the patient switch. The alarm will sound and (120 V) the unit will run to slack rope or (220 V) the unit will brake until timer is reset.

8.0 Lumbar Alarm Test:

- 8.1 Set Treatment Timer to 15, Max lbs. to 50 (23 kg), Min. to 0 and Mode to Static.
- 8.2 Turn power **ON** and the alarm will sound, the Lumbar will flash rapidly and the unit will not start.
- 8.3 Depress Lumbar switch and the alarm will stop, Lumbar lamp will flash slowly and the unit will start.

9.0 *Minimum Set Above Maximum Test:*

- 9.1 Set Treatment Timer to 15, Max lbs. to 10 (5 kg), Min. to 0 and Mode to S.
- 9.2 Turn power **ON** and adjust minimum to 15 lbs. (6.8 kg).
- 9.3 Verify that Min / Max LED and Alarm Sound are **ON**.

10.0 *Static Mode (Span) Adjustment:*

- 10.1 Set Treatment Timer to 15, Max lbs. Fully Clockwise, Min. to 100 (45 kg), Hold to 0, Rest to 10 and Mode to Static.
- 10.2 Turn power **ON** and push Lumbar switch.
- 10.3 After unit runs up, adjust R7 until strain gauge/dynamometer reads 200 lbs. or 220.5 lbs. + 5%, (91 kgs or 100 kgs + 5%/Export) making sure to only adjust from an increasing pull (*i.e.*: raising from lower poundage (kg). If force is exceeded, cycle unit down and repeat this step).
- 10.4 Adjust trimmer "VR2" (upper trimmer) on the digital readout for an indication of 199 lbs. (91 kg).
- 10.5 Set Hold to 10 and Mode to Intermittent. Allow unit to cycle and verify force, while checking to make sure readout remains correct.

11.0 *Hold and Reset Time Adjustment/ Treatment Timer Test:*

- 11.1 Set Treatment Timer to 30, Max lbs. to 50 (23 kg), Min. to 0, Hold to 10, Rest to 10 and Mode to Intermittent.
- 11.2 Turn power **ON** and push Lumbar switch.
- 11.3 When unit runs to 50 lbs. (23 kg), adjust R54 until the Hold LED is **ON** as follows, at the respective knob positions:
10 sec. + 1 sec. 30 sec. + 2 sec. 60 sec. + 4 sec.
- 11.4 Set Hold to 0. With Hold LED **OFF**, unit runs to 0 lbs. and Rest LED is **ON**.
- 11.5 Adjust R56 for the Rest LED times as follows, at the respective knob positions:
10 sec. + 1 sec. 30 sec. + 2 sec. 60 sec. + 4 sec.
- 11.6 Set Treatment Timer down to less than 5 minutes and allow to time out. Verify treatment stops and bell sounds.

12.0 *Tension Knob Calibration:*

- 12.1 Set Treatment Timer to 60, Max lbs. to 0, Min. to 0 and Mode to Static.
- 12.2 Starting at 20, adjust Max knob in 10 lb. (5 kg) increments and verify panel digital readout and strain gage/dynamometer are within +5% of the knob setting or 5 lbs. (whichever is greater). Adjust knob positions as required. If the desired reading is exceeded, return to previous pound step, then continue.
- 12.3 Set Max. lb. to 200 (91 kg), Hold to 10, Rest to 10 and Mode to Intermittent.
- 12.4 Starting at 190 lbs. (86 kg), adjust Min. knob in 10 lb (5 kg) decreasing increments and verify panel digital readout is within +5% of the knob setting or 5 lbs. (whichever is greater). Adjust knob positions as required. If the desired reading is exceeded, return to previous pound step, then continue.

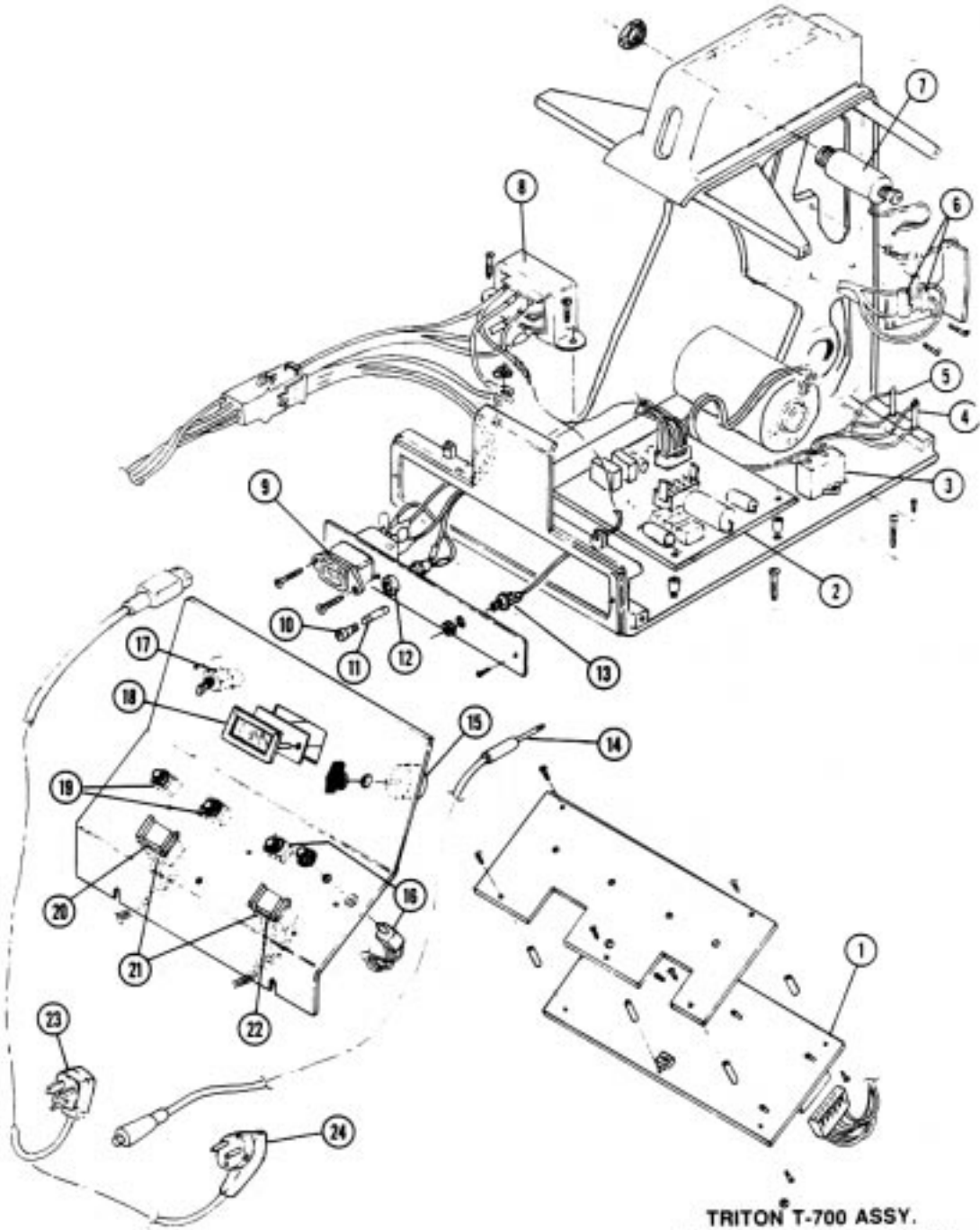
13.0 *Down Limit Switch Adjustment and Check:*

- 13.1 Mount the unit vertically and turn power **ON**.
- 13.2 Attach 1 lb. (1/2 kg) weight to rope.
- 13.3 Adjust down limit switch by gently bending the actuator arm until motor stops.
- 13.4 Verify that adding 1/2 lb. (1/4 kg) weight does not cause motor to run.
- 13.5 Install covers on unit.

Troubleshooting

SYMPTOM	CAUSE AND/OR REMEDY
1. When machine is turned on, power lamp does not light.	1. Replace fuse F1. Replace Lamp PL1.
2. Motor continues to run down when there is no pull on the rope.	2. Down limit switch needs adjusting
3. When the treatment time is activated, intermittent alarm sounds but no alarm lights on front panel are lit.	3. Patient cord is unplugged or broken. Transducer defective.
4. With the minimum pounds set full counterclockwise, "rest" lamp does not come on at end of a pull cycle.	4. Zero Pot R3 needs to be adjusted.
5. Lumbar mode lamp does not light when selected.	5. Lamp PL2 is burned out. Treatment timer is not activated Alarm is not activated
6. Lumbar alarm lamp does not go out when lumbar mode is selected.	6. RY3 is bad; S-2 is bad; broken wire.
7. External gear train makes noise when machine is releasing pull at low pounds.	7. Gear mesh is too tight (Proper gear mesh adjust: With machine turned off, loosen lock nut on mesh-adjust screw. Observe clearance between drive gear and idler gear. Turn mesh-adjust screw counterclockwise for zero clearance between teeth of drive and idler gears. Then turn mesh-adjust screw clockwise one and one-quarter turns.(Tighten lock nut.)
8. Motor does not run down when rope is pulled, with machine on and power cord plugged in.	8. Replace fuse F1 or F2. Down limit switch needs adjustment or replacement. The Anti-Reverse Switch is bad, or possibly the ARS actuator is stuck, holding the ARS open. Replace the ARS or ARS actuator as required. Check motor and motor-run capacitor.
9. Motor does not run up when commanded to do so.	9. Check operation of relays. Check motor and motor-run capacitor.

Electrical Assembly



TRITON T-700 ASSY.
ELECTRICAL COMPONENTS

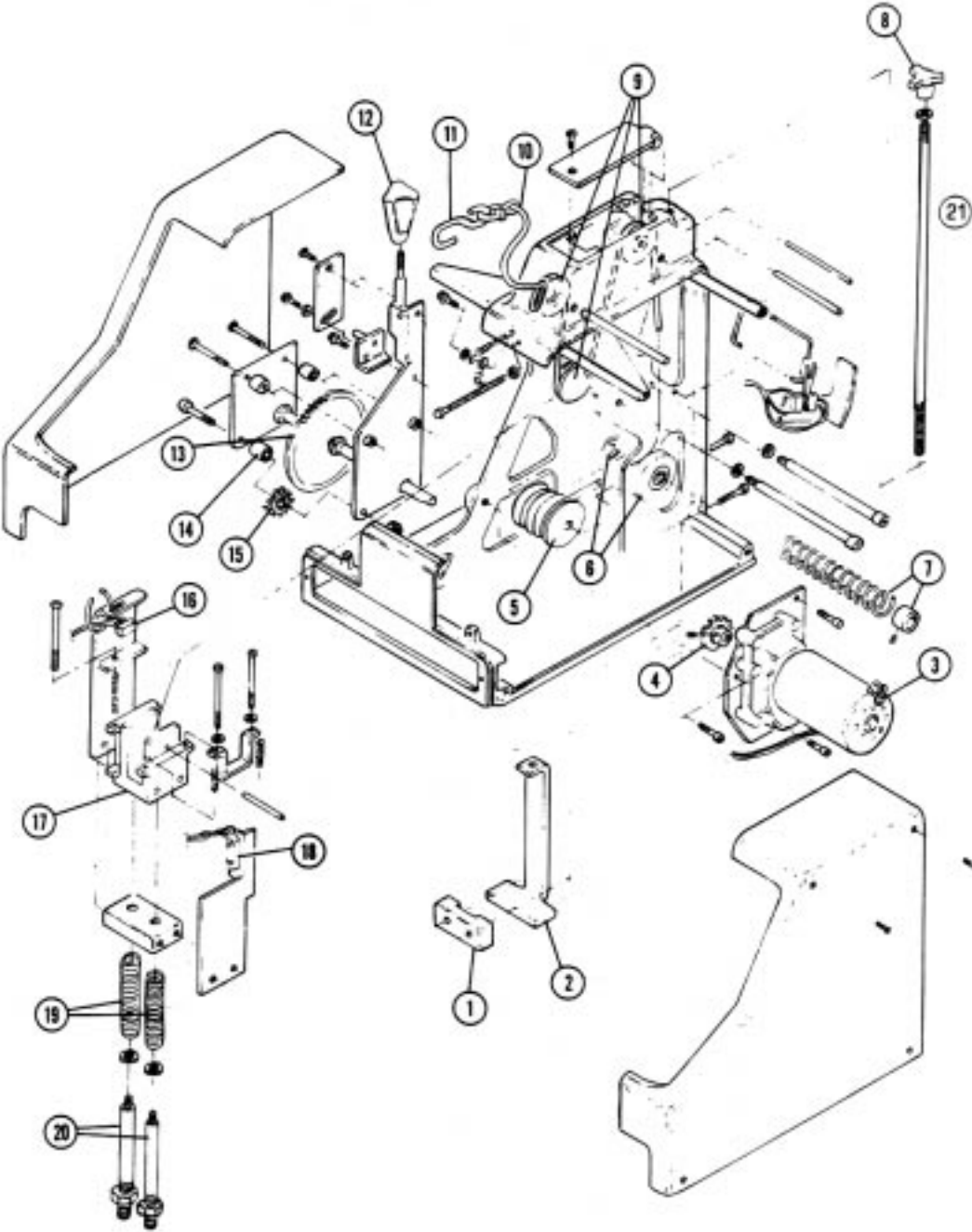
Electrical Components Parts List

Item	Part No.	Description	Qty.
1	73107	PC Board Triton® T-700 B1 Assembly	1
2A	73117	PC Board TX7M-B2 Assembly*	1
2B	67965	PC Board T-700 Power & Relay Assembly**	1
3A	60335	Capacitor 6 Microfarad 250 V*	1
3B	79292	Capacitor 1.5 Microfarad 440 VAC**	1
4A/5A	60337	Resistor 500 OHM 25 Watt*	1
4B/5B	79293	Resistor 2000 OHM 25 Watt**	1
6	70355	Switch Micro 11SM1-H58	2
7	71516	Solenoid	1
8A	70147	Transformer Signal 241-6-24*	1
8B	70745	Transformer Signal DP241-6-24**	1
9	70286	Connector AC Input Potter 615G6	1
10A	60900	Fuse Carrier 1/4 x 1-1/4 *	1
10B	60910	Fuse Carrier 5mm x 20mm **	2
11A	71534	Fuse MDA 2 Amp 250V Slo-Blo*	1
11B	71538	Fuse 1 Amp 250V Time Lag**	2
12A	70316	Fuse Holder*	1
12B	70316	Fuse Holder**	2
13	73540	Connector 1/4" Phone Jack	1
14	73110	Patient Cord	1
15	70737	Timer 60 Minute Bell	1
16	74600	Potentiometer 2.5 mm Clarostat	2
17	71525	Switch DPDT	1
18	72685	Meter Digital Volt Triton®	1
19	71518	Potentiometer 10K Bourns	2
20	72011	Switch Alternating Action	1
21	71899	Lamp 12V #73	2
22	72010	Switch Momentary Action	1
23	72453	Cord Set 16 GA 3 Cond Gray*	1
24	21284	Cord Set 8' Euro**	1

*Indicates items used on 120V units.

**Indicates items used on 220/240V units.

Mechanical Assembly



TRITON T-700 ASSY.
MECHANICAL COMPONENTS

Mechanical Components Parts List

Item	Part No.	Description	Qty.
1	70277	Clamp Striker	1
2	73154	Clamp Traction Machine Hold Down	1
3A	66920	Motor Brother 120V*	1
3B	66921	Motor Brother 220V 50 Hz**	1
4	72336	Gear Drive 20 Tooth	1
5	70311	Rope Drum Mechanical Traction	1
6	71934	Bearing Nice 1616DC	2
7	73147	Spring Rope Return Assembly	1
8	70336	Knob Clamp	1
9	70369	Pulley AN210-3A	3
10	70697	Rope Triton® #8 x 68"	1
11	73155	Rope Hook	1
12	70337	Knob Rope Release	1
13	73160	Shaft Rope Drum with Gear	1
14	70237	Idler Bearing	1
15	73163	Idler Gear	1
16	70355	Switch Micro 11SM1-H58	1
17	73130	Cradle Casting	1
18A	72831	Transducer Linear Potentiometer (10K)*	1
18B	66793	Transducer Bourns **	1
19	76490	Spring Transducer Reaction 1.75"	2
20	72735	Bolt Shoulder 3/8 x 3 3/4 Special	2
21	73156	Clamp Screw	1

*Indicates items used on 120V units.

**Indicates items used on 220/240V units.

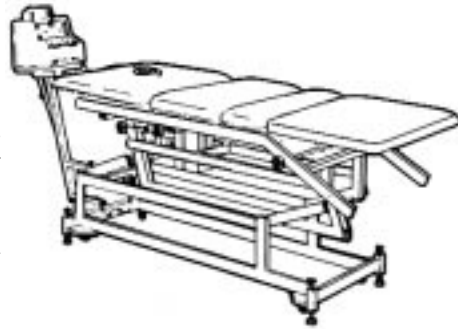
Triton® Tables

The full line of Triton sturdy traction tables completes the comprehensive Triton Traction System. No other traction table matches Triton's combination of strength, comfort and convenience.

The fully adjustable TRE-24 model is equipped with electric "Hi-Low" variable height control from 22 to 38 inches. This feature brings the table to stretcher or wheelchair level for easy side transfer, eliminating awkward patient lifting. Adjustable head and lumbar sections can be raised and lowered, increasing treatment applications. And the TRE-24 traction unit pedestal tilts downward as much as 45 degrees for administering cervical traction.

Triton also makes two fixed height traction tables. The TRF-22 is a moveable two section, 31" fixed height model that offers both comfort and economy. The TRF-24 is a four section, 31" fixed height table with adjustable head and lumbar sections for greater versatility.

All Triton traction tables are upholstered in high quality, flame resistant vinyl for easy care and durability. Five colors are available to match any office decor. Triton's sturdy design and rugged construction ensure years of comfort and stability.

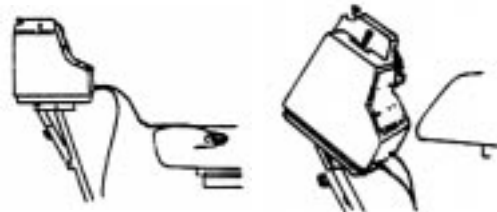


The Triton® Traction System

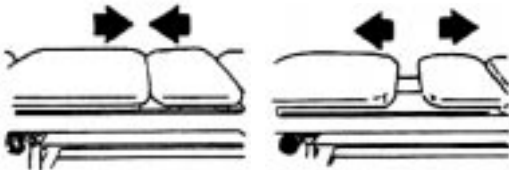
Triton® Tables



Fully adjustable head and lower sections tilt up and down for all common treatment positions



Traction unit pedestal tilts downward (up to 45°) for administering cervical traction.



Lower sections separate on ball bearing mounts for use in lumbar traction. Sections can be locked in place during other treatments. Reduces patient discomfort while increasing quality of treatment.



Seven position, 180° turret locks into place, traction unit pedestal rotates for complete patient accessibility providing comfort and convenience for both patient and therapist.

More Trusted Products from Chattanooga Group, Inc.

Achiever™

Supports

Adapta®

Treatment Tables

A.E.R.® Boot

Auto Edema Reduction Boot

AirMedex™

Alternating Pressure Mattress

boo-boo pac™

Child Size Bear-Shaped Cold Pack

Cambion™

Shock Dampening Foot Care Products

Carpal-Trac™

Carpal Traction Accessory

ColPac®

Chilling Units and Reusable Cold Therapy Products

Conductor™ Gel

Highly Conductive Ultrasound Gel

Contracture Products

Contracture Management Orthotic Products

CTS™

Carpal Tunnel Stretching Device

Dura-Stick™ Electrodes

Self-Adhesive Electrodes

EMG® Retrainer

Dual Channel Surface EMG

Flexi-Pac™ I and II

Reusable Hot and Cold Compresses

Gel Medex™

Gel Mattress Overlay

Hydrocollator®

Heating Units and HotPacs™

Intellect® Legend

Ultrasound and Electrotherapy Products

Measurement Instruments

Dynamometers, Goniometers, etc.

Myossage®

Massage Lotion

Nylatex®

Elastic Wraps

OptiFlex®

Continuous Passive Motion

Para-Care®

Paraffin Wax Unit

Pillow Perfect™

Cervical Pillow Line

Pivotal Therapy System™

Orthotics for the Spine

ProPower Pillow™

Power Massage Pillow

PresSion®

Intermittent Compression

Pron Pillo®

Positioning Pillow

SPORT-PAC™

Soccer Ball Shaped Cold Pack

Therma-Wrap™

Hot and Cold Compression

Triton®

Treatment and Traction Equipment

TX®

Treatment and Traction Equipment

Vectra™ Series

Ultrasound and Electrotherapy products.

Wellness 1st™

Back Support

Women's Contour Back Support

Back Support



ISO 9001 CERTIFIED

© 2000 Chattanooga Group, Inc

4717 Adams Road • P.O. Box 489
Hixson, TN 37343 U.S.A.
1-423-870-2281
1-800-592-7329 U.S.A.
1-800-361-6661 CANADA
www.chattgroup.com

72408D